

Need a custom
solution?

CONTACT US



Solder Bearing Lead (SBL) Technology

ENNOVI SBL Technology delivers perfect, consistent solder joints in one step, eliminating variability, rework, and rejects common with traditional soldering. This results in 100% solderability and superior joint consistency.

ENNOVI™

PROVEN RELIABILITY UNDER HARSH CONDITIONS



Engineered to withstand thermal stress, vibration, and environmental challenges, our flux cored solder preform creates a perfect mechanical and electrical solder joint every time.

PERFECT SOLDER JOINTS WITH CLAW-SHAPED EDGE CLIP



Pre-applied solder and flux ensure precise, repeatable joints with zero variability, eliminating cold joints, voids, and costly rework.

ONE-STEP ASSEMBLY FOR HIGHER EFFICIENCY



Streamlines the soldering process into a single step, eliminating the need for solder paste, solder dipping or secondary flux.

APPLICATIONS

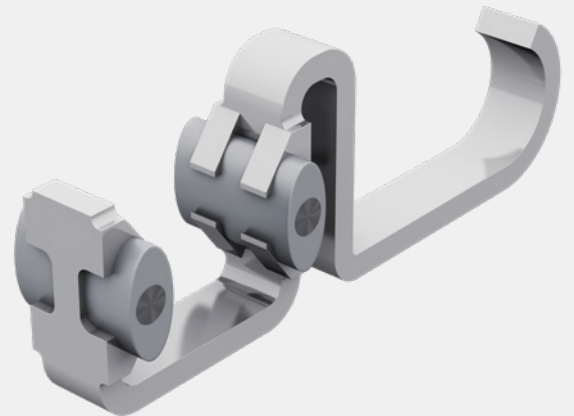
+ Interconnect and assembly in hybrid circuits, sub-assembly stacks, control units, sensors, shield assemblies, lead frames, PCBs and flex circuits.

MARKETS

+ Aerospace
+ Automotive
+ Industrial
+ Medical
+ Telecommunications

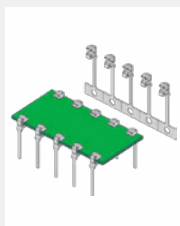
SOLDER BEARING LEADS TECHNOLOGY

- + **One step assembly:** Lead can be simply pushed onto a substrate and reflowed.
- + **100% solderability:** Unique ENNOVI "claw" type leads permit direct contact between the solder and conductor pad, making unsoldered joints virtually non-existent.
- + **Easy, automated assembly:** One operator or machine, with one process can complete the entire pin-to-substrate assembly.
- + **Adaptability to safe, local heating:** ENNOVI leads can be bonded to pads without raising the temperature of the boards to the reflow point, greatly reducing the chances of damaging prepopulated components.
- + **Ability for continuous reflow**
- + **Elimination of thermal mismatch and vibration failure**
- + **Versatility:** Available in many different solder types, with varying melting points, and with any type of flux. Allows great flexibility in stacked and compound soldering operations.
- + **Fast, easy conversion:** No significant capital investment or specialized labor skills required.
- + **Significantly reduced product costs:** Fast, reliable solution for attaching leads to hybrid and PCB circuits — higher quality products, lower overall cost.

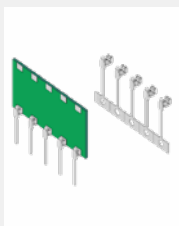


PRODUCT TYPES

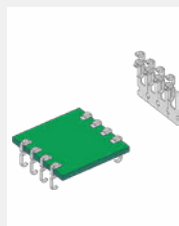
Dual Inline Package



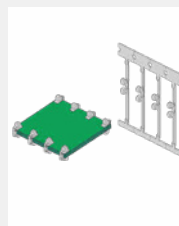
Single Inline Package



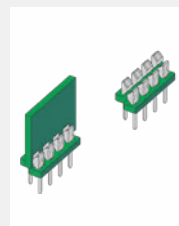
Surface Mount Package



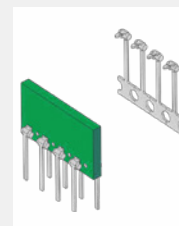
Shorting Clip



Dual Row Interconnect



Through Hole Interconnect



Special Interconnect

